

## Whole genomic sequencing of the SARS-CoV-2 variants in Sri Lanka

03.12.2021

94 samples were sequenced from 4<sup>th</sup> week of November and samples from unvaccinated PCR positive passengers who arrived in Sri Lanka. **Omicron** was detected in a passenger originating from Nigeria. All other were delta.

**Omicron:** 1/93 from Nigerian passenger.

### Detection of different delta sub lineages and locations:

**AY.28 (Sri Lanka delta sub-lineage):** 31/93. Detected from Colombo, Gampaha, Nuwaraeliya, Balngoda, Bentota, Kuruwita, Potuwil

**AY.104 (Sri Lanka delta sub-lineage):** 43/93: Colombo, Bandaragama, Getahena, Gampaha various places, Palindanuwara, Vavuniya, Waga, Welgama,

AY.122: Kosgama

AY.33: Kalutara

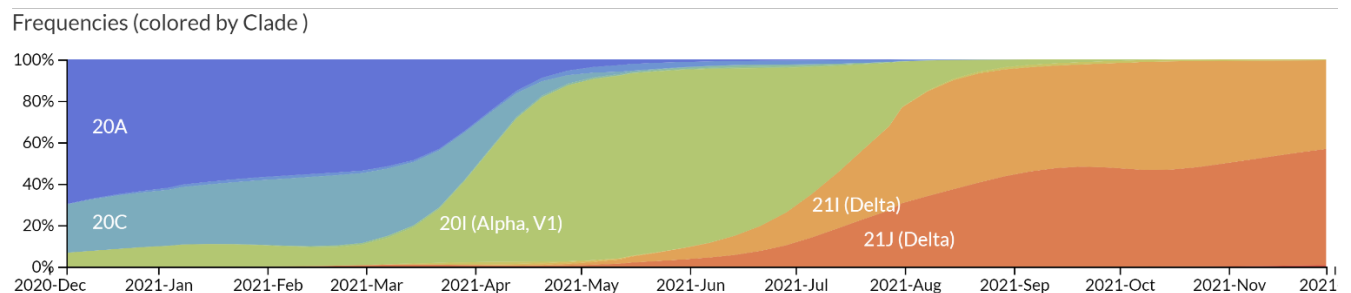
AY.4: Negombo

AY.61: Thalangama

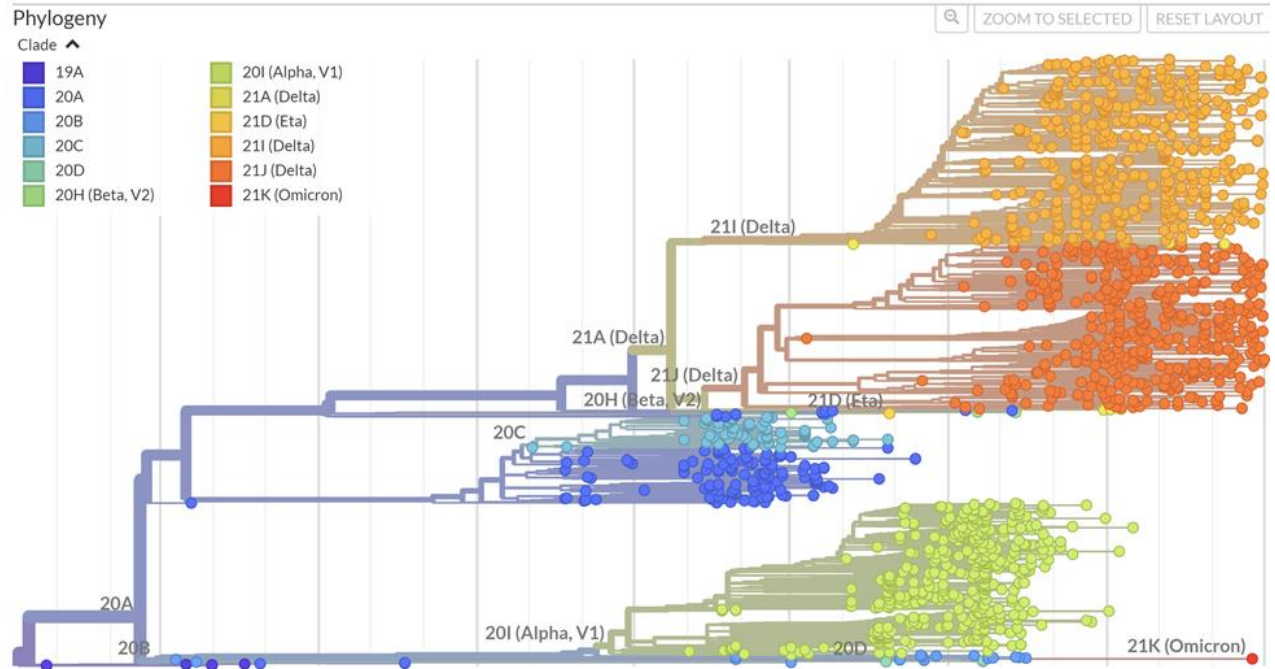
AY.66: Puwakpitiya

B.1.617.2: Colombo, Gampaha, Trincomalee, Puwakpitiya

### Timeline of the emergence and displacement of different variants in Sri Lanka

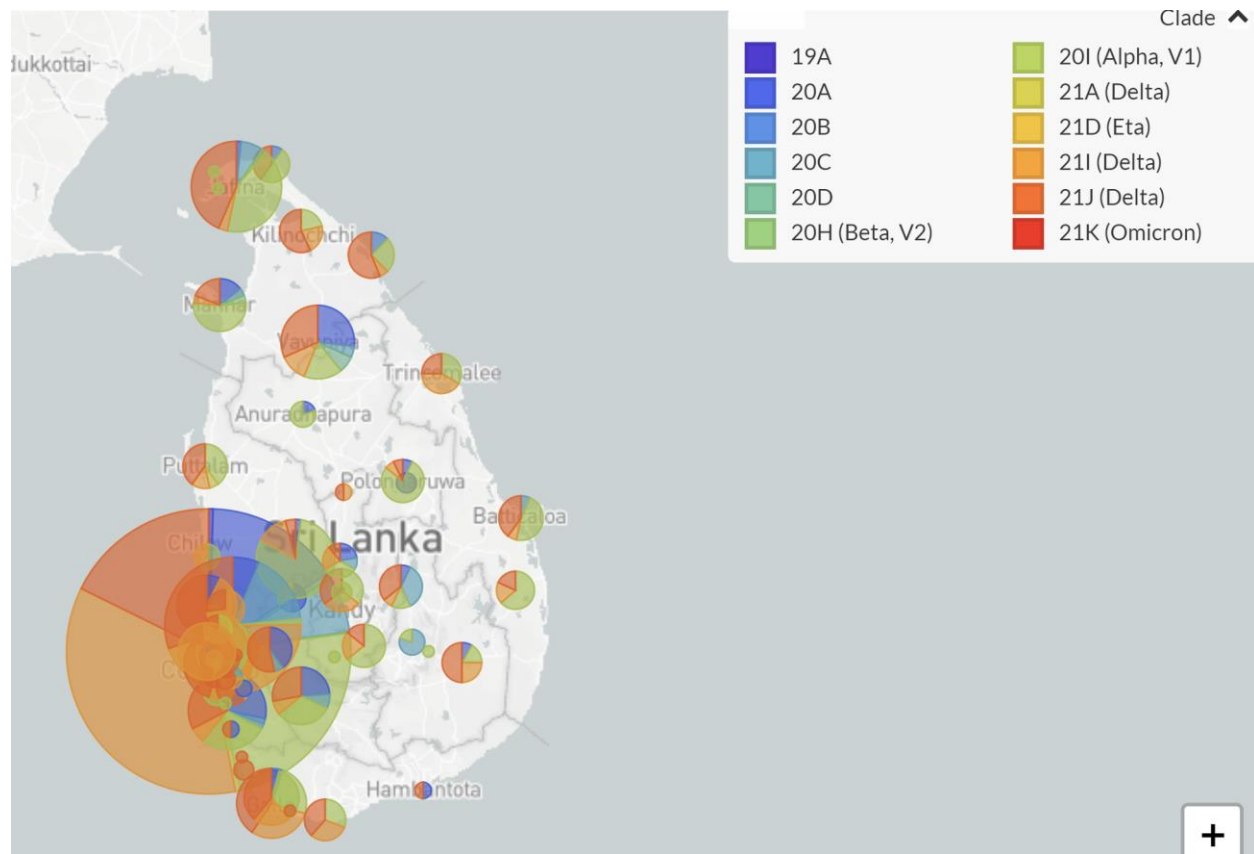


**Figure 1: Change in the SARS-CoV-2 variants in Sri Lanka over time.** The graph shows changes in the different variants



Locations of viruses sequenced in Sri Lanka (from the beginning)

Figure 2 : Phylogenetic tree of all SARS-CoV-2 sequences identified in Sri Lanka so far



**Figure 3: Sequencing of viruses carried out in Sri Lanka so far.**

**Other variants identified within Sri Lanka:** B.1.411: Sri Lankan variant, B.1.1.25, B.1.258, B.1.428, B.4, B.4.7, B.1.1.365, B.1.525, B.1, B.1.1