

Whole genomic sequencing of the SARS-CoV-2 variants in Sri Lanka

31.12.2021

176 samples were sequenced from 14th to 23rd of December from the community and arrival and departure samples from the airport.

Omicron: 41/176. While most of these samples were from BIA, some were from MOH Minuwangoda, MOH Mahara, CMC and Colombo

Detection of different delta sub lineages and locations:

AY.28 (Sri Lanka delta sub-lineage): 19/176. Divulapitiya, Giriulla, Colombo, Gampaha, Matara, Mirigama,

AY.104 (Sri Lanka delta sub-lineage): Batticaloa, Colombo, Puwakpitiya, Duwulapitiya, Galle, Gampaha, Ja Ela, Ahungalla, Kuthulgala, Matara, Madampe, Baddegama, Thammita

AY.106: Negombo

AY.120: Nilpathagama

AY.122: Kandy, Udugampola

AY.127: Galle

AY.1.617.2: Awissawella, Minuwagoda, Diwulapitiya, Dompe, Kandy, Kuruwita, Colombo, Negombo

AY.43: Galle, Chilaw

Timeline of the emergence and displacement of different variants in Sri Lanka

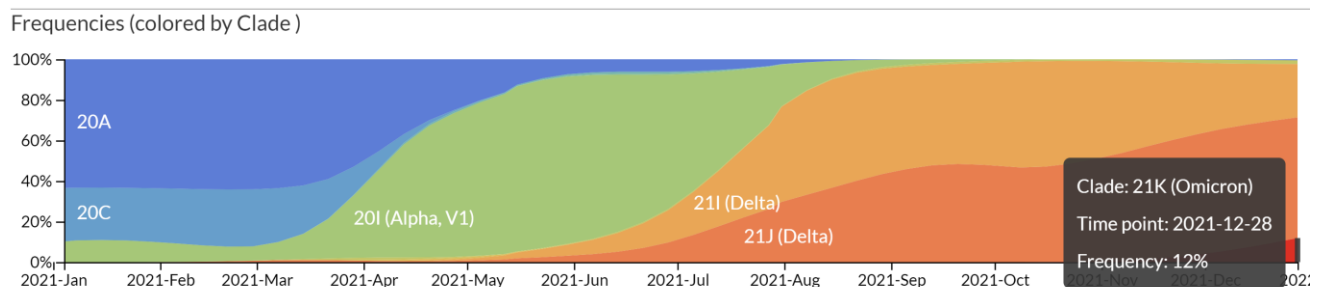


Figure 1: Change in the SARS-CoV-2 variants in Sri Lanka over time. The graph shows changes in the different variants

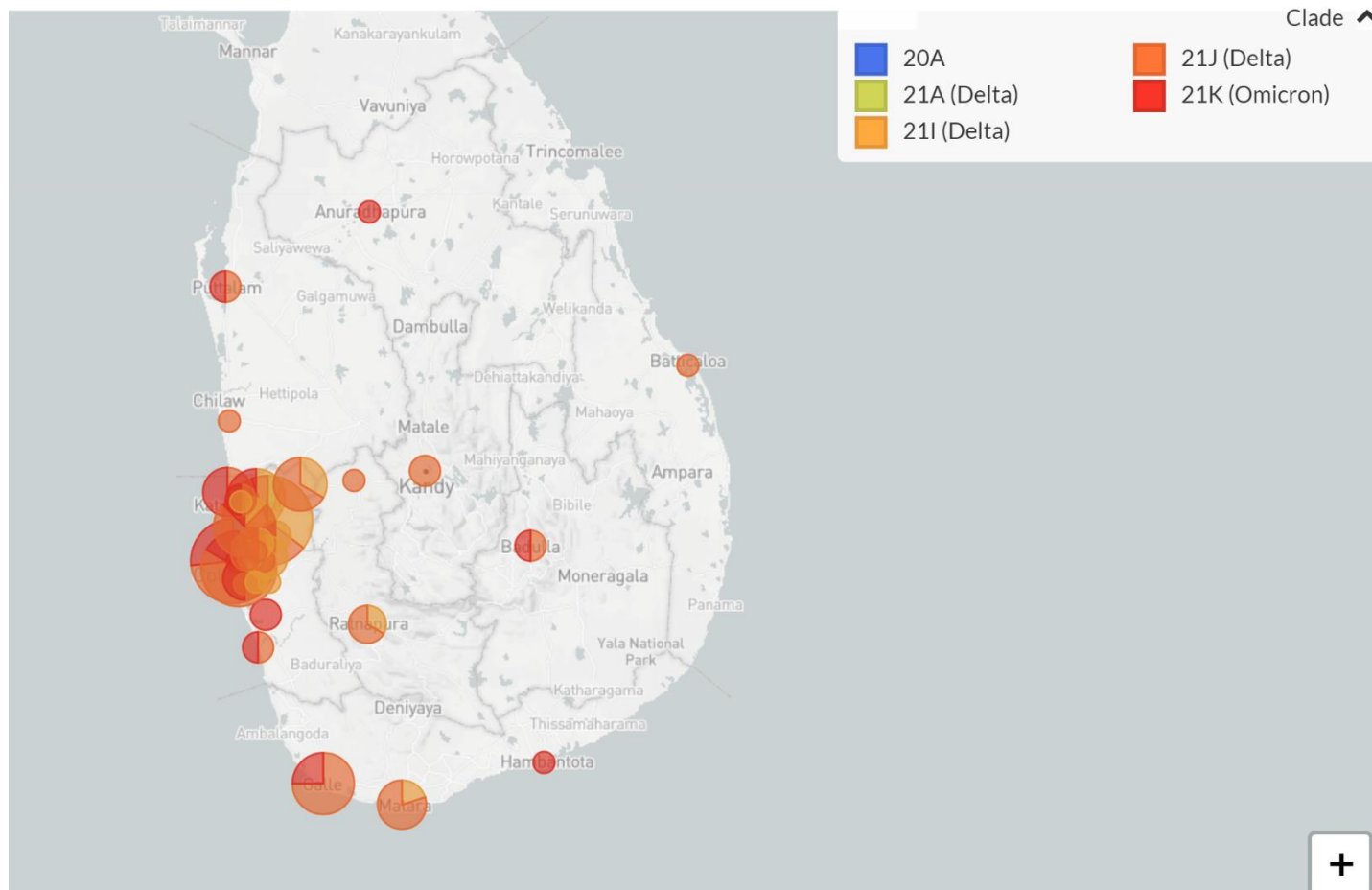
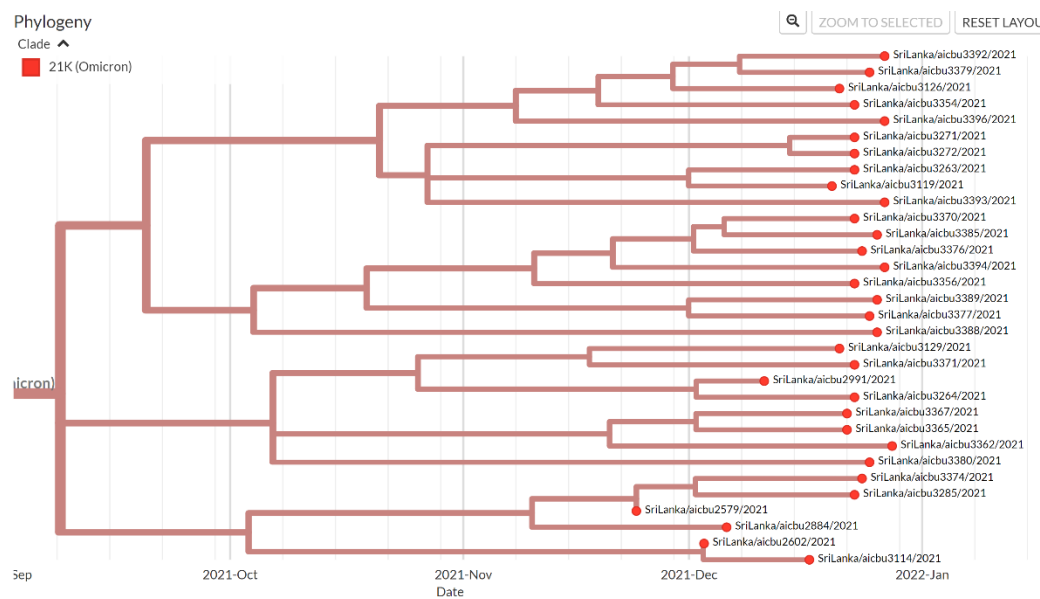


Figure 2: Locations of samples sequenced during the past week (3rd week of December)



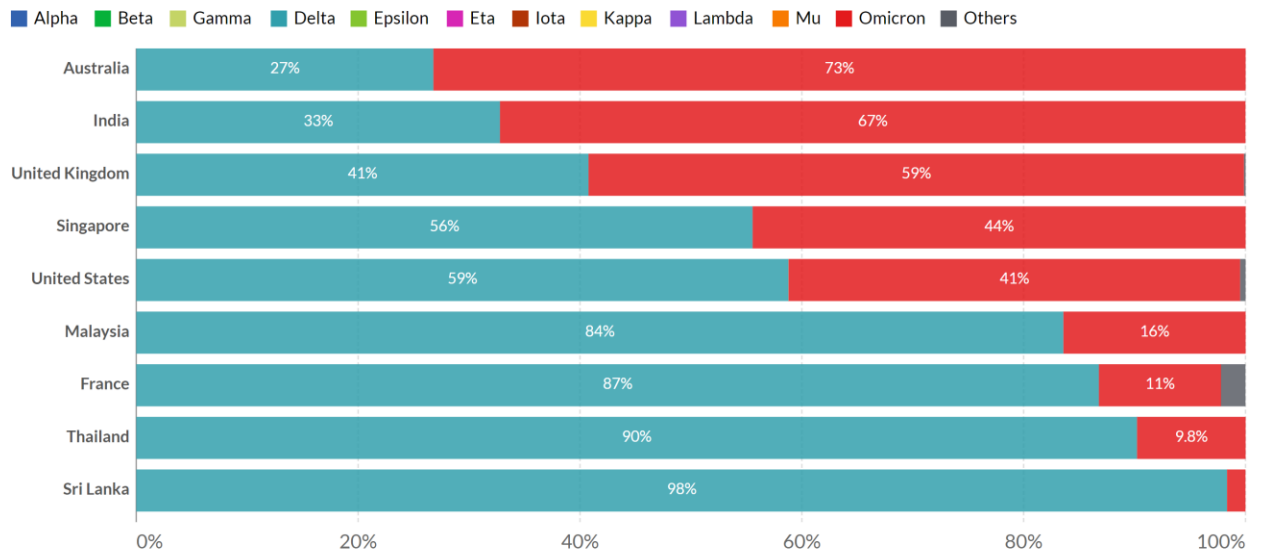
Phylogenetic tree of Omicron samples in Sri Lanka

Allergy Immunology and Cell Biology Unit, Department of Immunology and Molecular Medicine, USJ

SARS-CoV-2 sequences by variant, Dec 27, 2021

The share of analyzed sequences in the preceding two weeks that correspond to each variant group.

Our World
in Data



Source: CoVariants.org and GISAID

Note: This share may not reflect the complete breakdown of cases, since only a fraction of all cases are sequenced. Recently-discovered or actively-monitored variants may be overrepresented, as suspected cases of these variants are likely to be sequenced preferentially or faster than other cases.

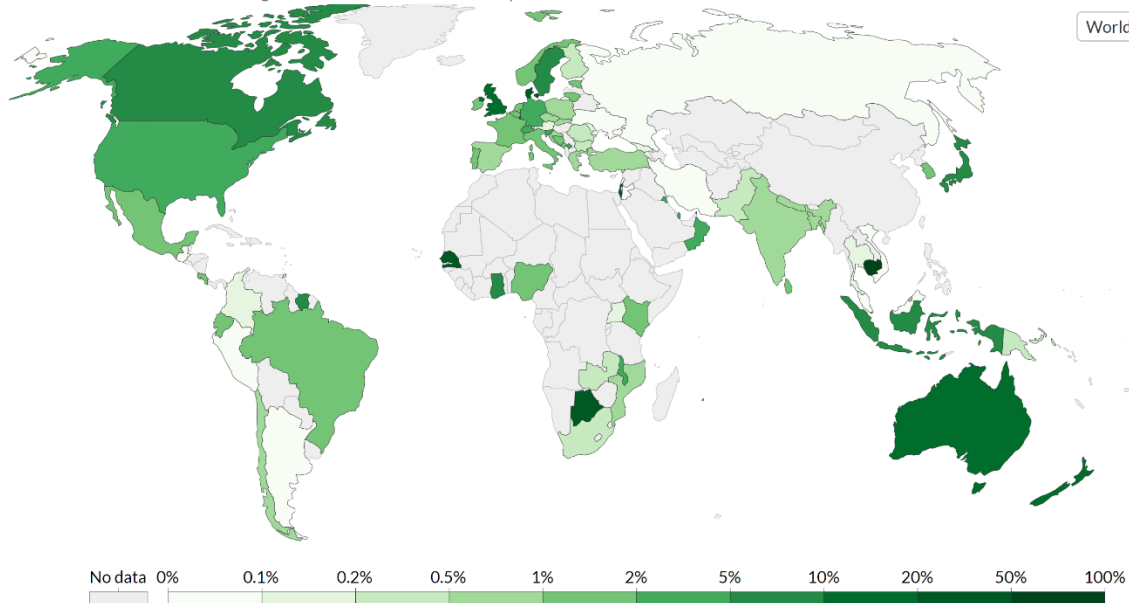
CC BY

Figure 4: Prevalence of Omicron in different countries in the world based on sequencing data (The current round of SL data does not appear yet in this website)

Share of confirmed COVID-19 cases sequenced, Dec 13, 2021

Share of confirmed cases for which the genome of the virus has been sequenced to determine which mutations it has.

Our World
in Data



Source: CoVariants.org and GISAID, Johns Hopkins University CSSE COVID-19 Data

CC BY

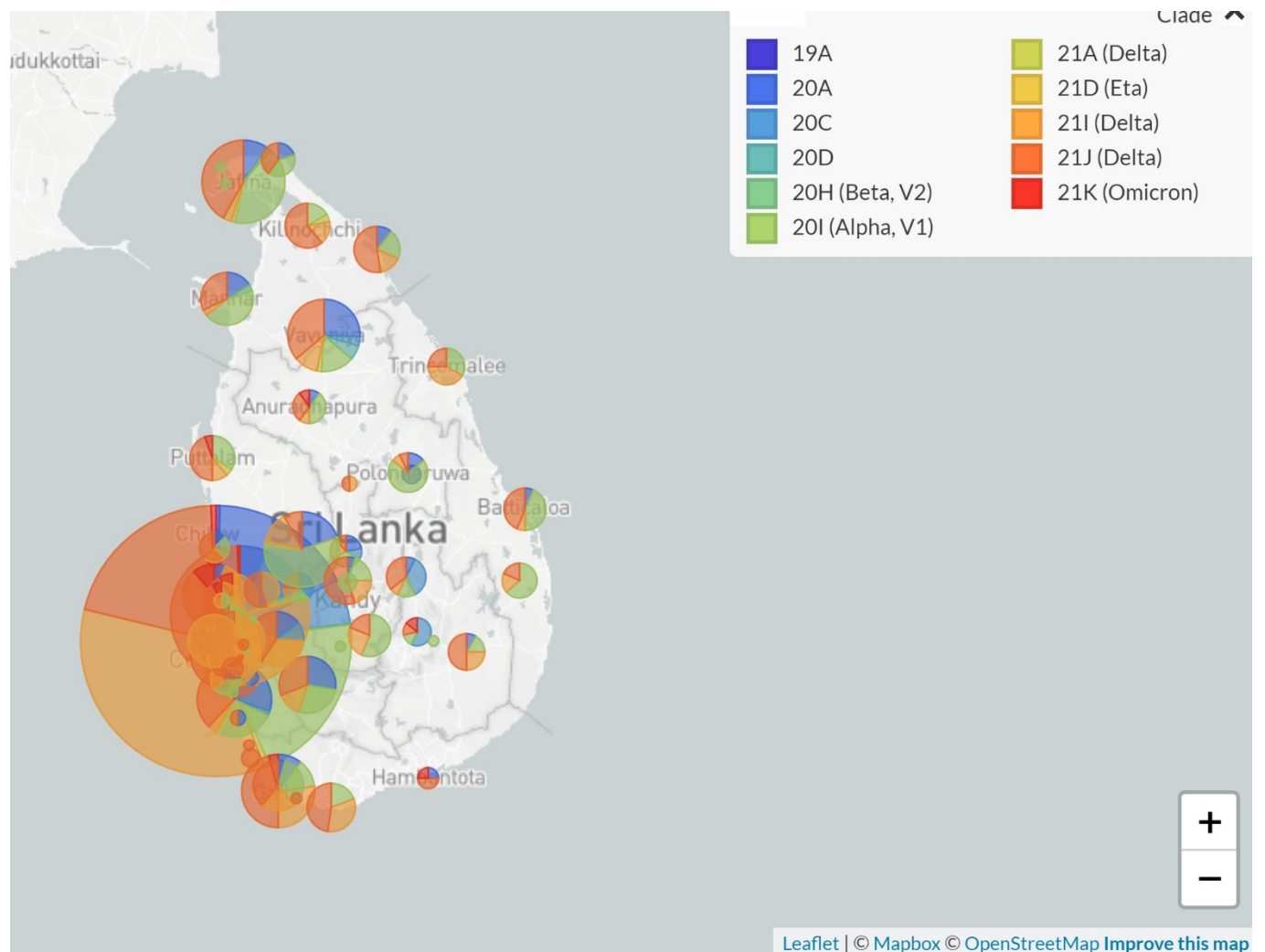


Figure 5: Sequencing of viruses carried out in Sri Lanka so far.

Other variants identified within Sri Lanka: B.1.411: Sri Lankan variant, B.1.1.25, B.1.258, B.1.428, B.4, B.4.7, B.1.1.365, B.1.525, B.1, B.1.1

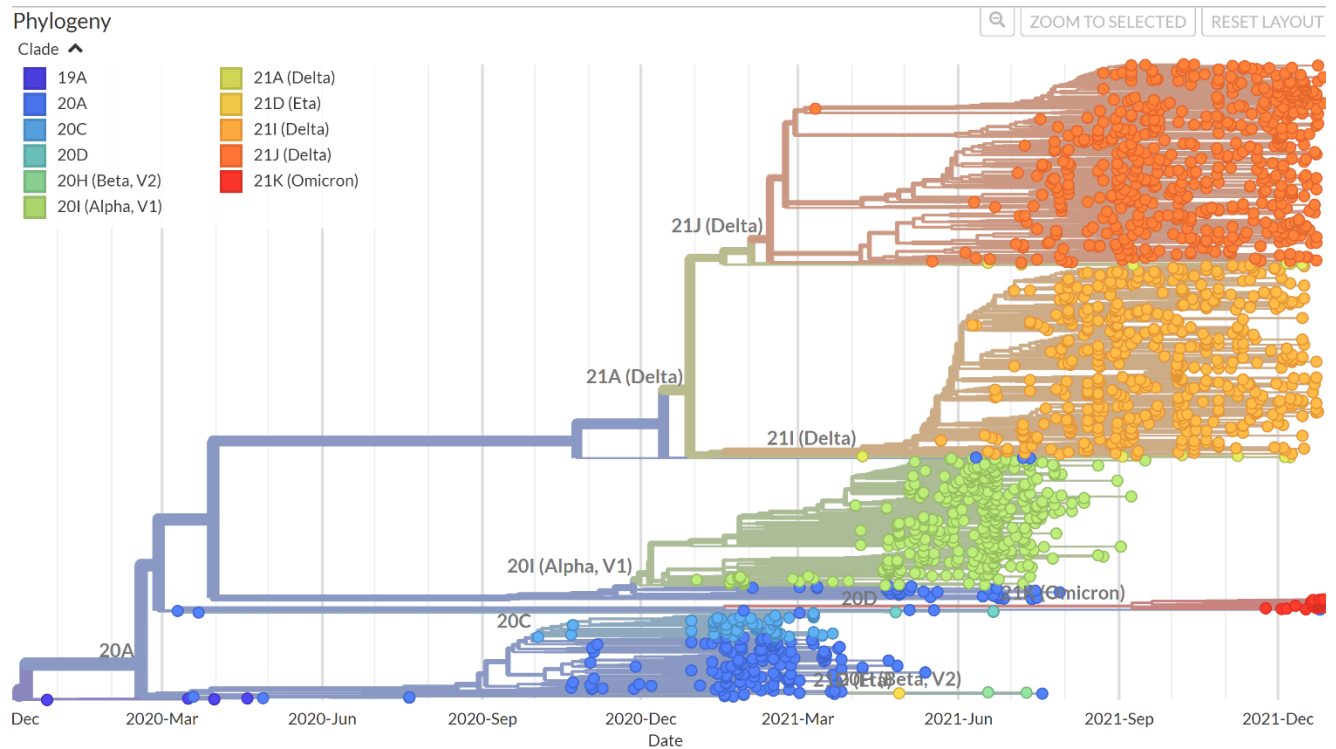


Figure 6: Phylogenetic tree of all SARS-CoV-2 sequences identified in Sri Lanka so far